

J-WRAP®



FEATURES AND SPECIFICATIONS

Construction

- 4FT LED Wraparound
- Made with durable commercial grade steel and plastic materials for long-lasting performance

Electrical

- Input Voltage: 120-277VAC
- Compatible with standard 0-10V dimmer
- Motion sensor optional

Applications

- Offices, retail, schools, restaurants, healthcare, residential and hospitality applications.

Installation

- Ceiling or J-box installation in general application, hanging is optional

Installation

- Comply with the requirements of the Standard(s) for Luminaires (CAN/CSA-C22.2No.250.0) and are identified with the cETL Listed Mark Design Lights Consortium ®(DLC)Premium.

Warranty

- 5 years warranty

Specs at a Glance	* Nominal Wattage (Switchable)
Configuration	ST4F-45PDNC
CCT (K)	3500 -4000 -5000 -5700 -6500K Selectable
Wattage (W)	20W-30W-40W adjustable
Lumens (lm)	max.5000lm
Efficacy (LPW)	125lm/w
Size	4FT
CRI	>80
Input Voltage	120-277V
Operating Temp	-20°C-45°C
Certifications	ETL&DLC 5.1 Premium
Warranty	5-year limited warranty

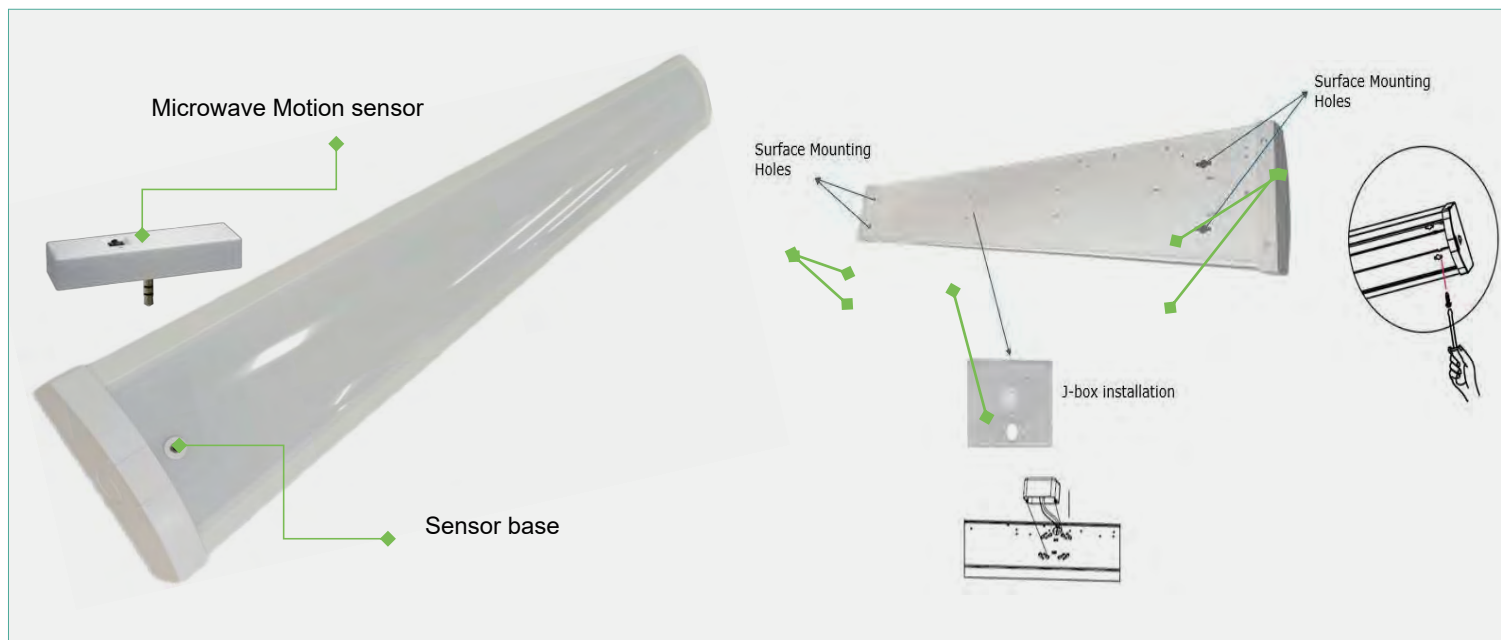
LED WRAPAROUND



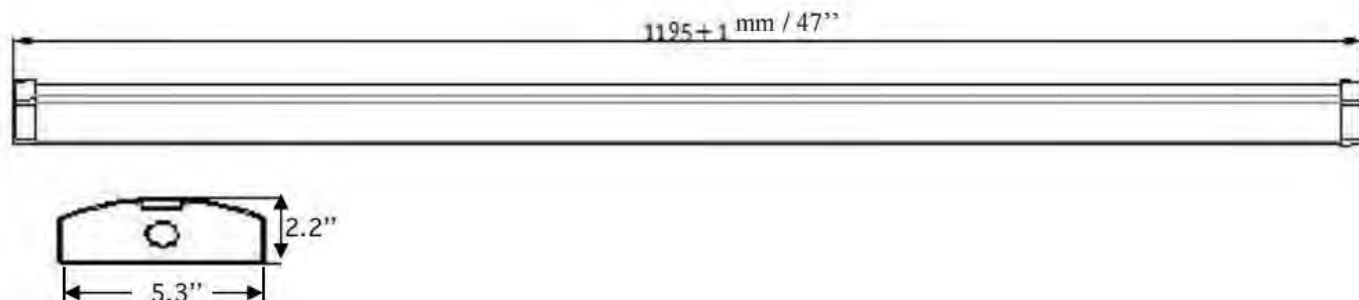
Contractor Essentials
LIGHT MORE, PAY LESS

Ordering information

Brand	Size	Wattage xxxW	CCT"P"	Blank"N"	Input Voltage
Contractor Essentials	4F 4FT	40 20W/30W/40W	P= CCT Selectable 3500K-4000K- 5000K-5700K- 6500K	M Motion Sensor 8EM Non-montion&emergency	C=120-277V



Dimensions



ACCESSORIES



Microwave sensor

- Frequency: 5.8GHz+/- 75MHz
- Microwave Power: <0.3mW
- Installation Height: 4m/13.12Max
- Detection Distance: >3m/9ft
- Detection Angle: 30-150(without glass cover)



Sensor controller

- Operation Distance Max: 15m/49ft(3V)
- Emission Angle: <30 degree
- Function: On/off, mounting height, detection area, daylight threshold, standby dim level, holdtime, brightness adjustable, daylight harvesting
(Read the manual to know the steps of setting)

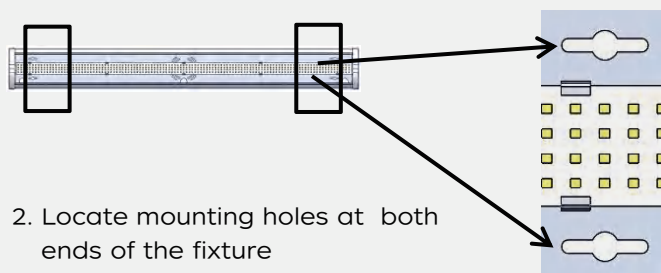
INSTALLATIONS

WARNING: Turn off power at fuse or circuit breaker before installing.

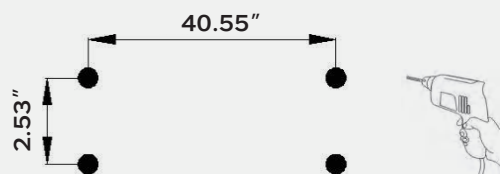


Open the covers at both ends of the lamp, remove the PC cover, and then take out the installation accessories, (if there is a sensor, you need to remove the terminal wire)

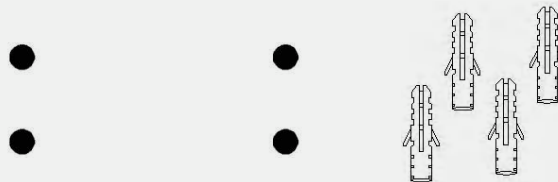
1. Remove the PC cover



2. Locate mounting holes at both ends of the fixture



3. Use an electric drill to drill holes in

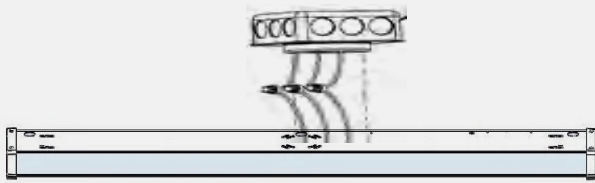


4. Tap the expansion screw into the hole as shown

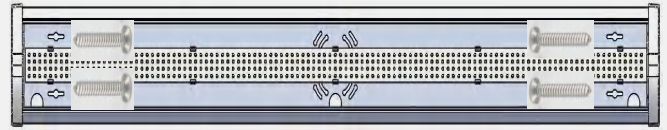
LED WRAPAROUND



Contractor Essentials
LIGHT MORE, PAY LESS



5. Wiring. (L to Live, N to Neutral, G to Ground)



6. Fix the fixture to the remaining four holes with



7. Take the PC cover and install it on one end of the

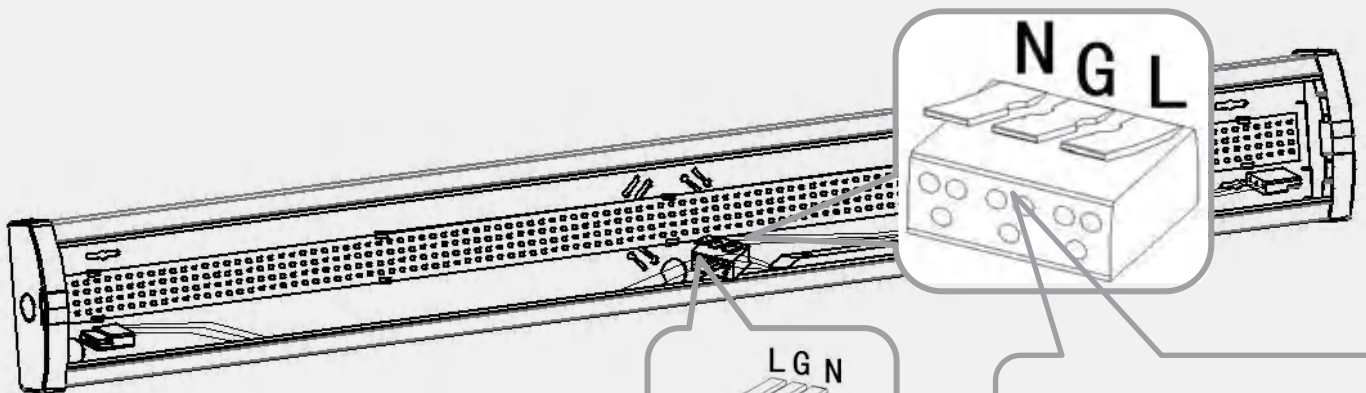


Plastic Clips on Ends



Sensor Connector

WARNING: Turn off power at fuse or circuit breaker before installing.

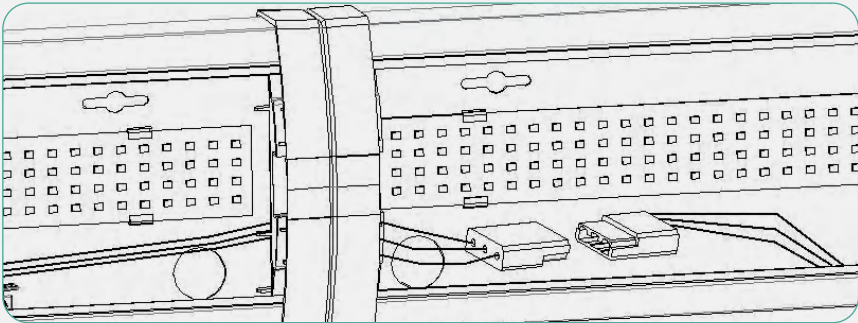


Connect linkable wires and driver wires to the output side of the terminal, L to L, N to N, G to G.

Connect AC Power Cables to the input side of the terminal L/N/G

LED WRAPAROUND

Connection: Plug the male/female connector from the previous light to the female/male connector of the next light.	Connection: The Linear Strips can be connected Max.450W.
	Max. Connection: 4FT: 10pcs



Packing Info



1pcs in an inner box



4pcs in an outer box

SIZE	4PCS/CARTON			CONTAINER		
	DIMENDION(INCH)	N.W(LBS)	G.W(LBS)	20'GP(PCS)	40'GP(PCS)	40HQ(PCS)
4FT	47.83"x11.81"x5.98	8.08	10	2024	4116	4912