

Version	2.0	Date	9/16/2021
Prepared By	C.L.		

**PRODUCT SPECIFICATION**

Category	Flood Light
Item Number	9569
Stock Code	FXFDL150SW/66/40K/BZ-KNC
Mounting	Knuckle Mount
Housing Color	Bronze (RAL#8019)



**ELECTRICAL CHARACTERISTICS**

Rated Wattage (W)	150 / 130 / 100	Replacement Wattage (W)	400 ~ 575
Tested Wattage (W)	150		
Input Voltage (V)	120 ~ 277	Surge Protect Level	6KV
Voltage Frequency (Hz)	50/60	Dimmable	1 - 10V
Input Current (A)	1.375 (@ 120V)	AUX (12V) Line	No
Power Factor	≥ 0.9		
THD	≤ 20%		

**PHOTOMETRIC CHARACTERISTICS**

Lumen (lm)	20890 / 16900 / 13500	CCT (K)	4000
Efficacy (lm/w)	130	Beam Angle (°)	NEMA 6x6
CRI	> 70		

**GENERAL CHARACTERISTICS**

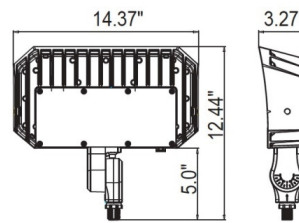
Operating Temperature (°F)	-40 ~ 113
Storage Temperature (°F)	-40 ~ 158
IP Rating	IP65
Rated Life	50000 hrs.
Warranty	5 years

**ACCESSORIES**

Item #	Stock Code	Description
K141030	REC3PLK/PHO	Photocell Kit (P10141 + P10030)
P10389	SPD-L-10KV-277	10KV Surge protector - 120V ~ 277V
P10390	SPD-L-20KV-277	20KV Surge protector - 120V ~ 277V

**PRODUCT DIMENSIONS**

Width- in (mm)	14.37" (365 mm)
Height- in (mm)	12.44" (316mm)
Depth- in (mm)	3.27" (83.1mm)
EPA (ft²)	1
Weight (lbs)	9.3
Mounting Height (ft)	10 ~ 26
Cable Length (ft)	4



**CERTIFICATIONS**

UL/ETL	cULus	CEC	
NSF/ETL Sanitation		JAB	
Energy Star		FCC	✓
DLC	V5.1 Premium	RoHs	✓

**DOCUMENTS**

LM79	✓	IES File	✓
LM80	✓	Dimmer List	

**COMMENTS**

--