

Version	2.0	Date	9/28/2021
Prepared By	C.L.		

PRODUCT SPECIFICATION

Category	Flush Mount - Disk
Item Number	9440
Stock Code	LED6FMD-110L9CCT5
Mounting	Ceiling
Housing Color	White + Frosted Lens



ELECTRICAL CHARACTERISTICS

Rated Wattage (W)	14	Replacement Wattage (W)	120
Tested Wattage (W)	14		
Input Voltage (V)	120	Surge Protect Level	2.5KV
Voltage Frequency (Hz)	60		
Input Current (A)	0.12	Dimmable	Incandescent Dimming
Power Factor	>0.9	AUX (12V) Line	No
THD	-		

PHOTOMETRIC CHARACTERISTICS

Lumen (lm)	1100	CCT (K)	2700 / 3000 / 3500 / 4000 / 5000
Efficacy (lm/w)	79	Beam Angle (°)	110
CRI	90		

GENERAL CHARACTERISTICS

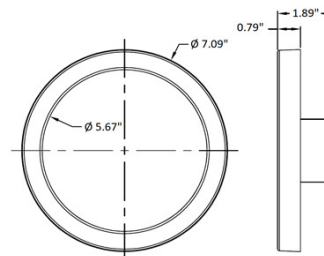
Operating Temperature (°F)	-4 ~ 104
Storage Temperature (°F)	-4 ~ 122
IP Rating	Wet location
Rated Life	50000 hrs.
Warranty	5 years

ACCESSORIES

Item #	Stock Code	Description

PRODUCT DIMENSIONS

Width- in (mm)	7.09" (180mm)
Height- in (mm)	1.89" (48mm)
Depth- in (mm)	7.09" (180mm)
EPA (ft ²)	N/A
Weight (lbs)	1.1
Mounting Height (ft)	>7.8
Cable Length (ft)	1.31



CERTIFICATIONS

UL/ETL	cULus	CEC	
NSF/ETL Sanitation		JAB	
Energy Star	✓	FCC	✓
DLC		RoHs	✓

DOCUMENTS

LM79	✓	IES File	✓
LM80	✓	Dimmer List	✓

COMMENTS

--