

Features & Benefits

- **Type A mode: Compatible with electronic ballast VE259MVHIP and VE259120HIP**
- **Type B mode: Internal Driver (Direct 120-277VAC input)**
- Long life | High CRI
- Instant on, no delay
- Convenient and quick installation
- Accessory: Default Fa8 End Cap Adapter Converter, Mounting Clip
- Compatible with controls and sensors
- Works in cold temperature applications
- Glass tube with ArmorCoat Shatterproof Coating
- 5 Year Warranty



* EMERGENCY BALLAST RESTRICTIONS



UniFlex™

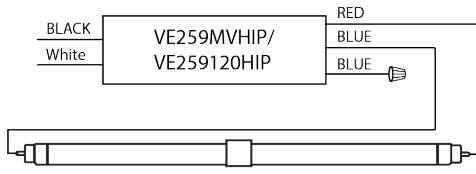
Commercial Grade LED T8 Lamp

Specification Data

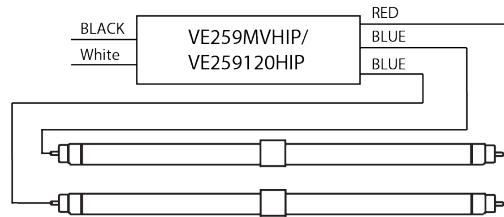
Order Code	Length	Input Voltage	Power Direct AC	Power w/ Ballast	CCT	Lumen	CRI	Beam Angle	Lamp Efficacy Direct AC	System Efficacy w/ Ballast	Life
L96T8/830/24G-AB	96	120-277V	24	27	3000K	3500	83	325	145	130	50000
L96T8/835/24G-AB	96	120-277V	24	27	3500K	3500	83	325	145	130	50000
L96T8/840/24G-AB	96	120-277V	24	27	4000K	3500	83	325	145	130	50000
L96T8/850/24G-AB	96	120-277V	24	27	5000K	3500	83	325	145	130	50000

Wiring diagram

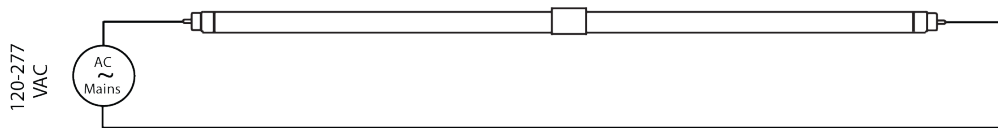
1-LAMP VE259MVHIP/VE250120HIP Wiring (Type A mode)



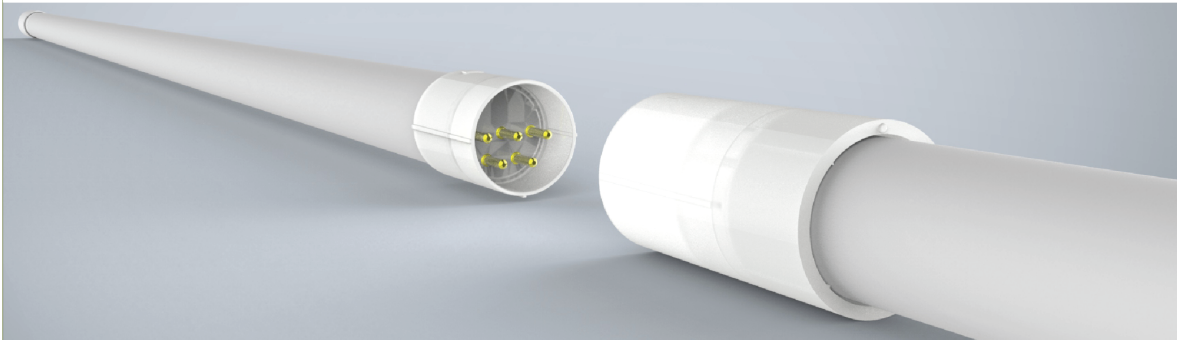
2-LAMP VE259MVHIP/VE250120HIP Wiring (Type A mode)



1-LAMP 120-277Vac Direct Wiring (Type B mode)



Assembling Demonstration



DLC Information

Order Code	DLC Product ID	DLC Product Model	DLC Product Version
L96T8/830/24G-AB	PLZ8LDRMERYI	L96T8/830/24G-AB	5
L96T8/835/24G-AB	PL8FG7WRZ09W	L96T8/835/24G-AB	5
L96T8/840/24G-AB	PLNKJ4MTNB89	L96T8/840/24G-AB	5
L96T8/850/24G-AB	PLBKMXLJOW9J	L96T8/850/24G-AB	5