

sunlite®

INSTALLATION INSTRUCTIONS

97095-SU | LFX/RWP/80W/3SCT | LED ROTATABLE WALLPACK FIXTURE



Please read and understand this entire manual before attempting to assemble, operate or install the product.

WARNING: Avoid fire or electrical shock. Follow installation instructions carefully. If unsure about electrical installation, consult a qualified electrician. Wear rubber-soled shoes and work on a sturdy ladder. Ground fixture to avoid potential electrical shock. Wear gloves before installation in order to avoid injury; Do not install the luminaire in rainy days, to avoid lighting stroke and damage to luminaire. Can not use the electric generator to test the LED luminaire. Min 75°C supply conductor. Suitable for wet location.

CAUTION: Turn off the power at fuse or circuit breaker box before installation and maintenance to avoid electric shock. Fixture must be installed according to National Electric Code and local building codes. Turn off the power immediately when there is smoke and fire during installation, inform professionals to overhaul; This luminaire is suitable for outdoor use.

This device complies with part 15 of the FCC Rules. Operation is subject to the following two conditions: (1) this device may not cause harmful interference, and (2) this device must accept any interference received, including that may cause undesired operation.

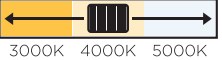
Retain these instructions for future maintenance reference.



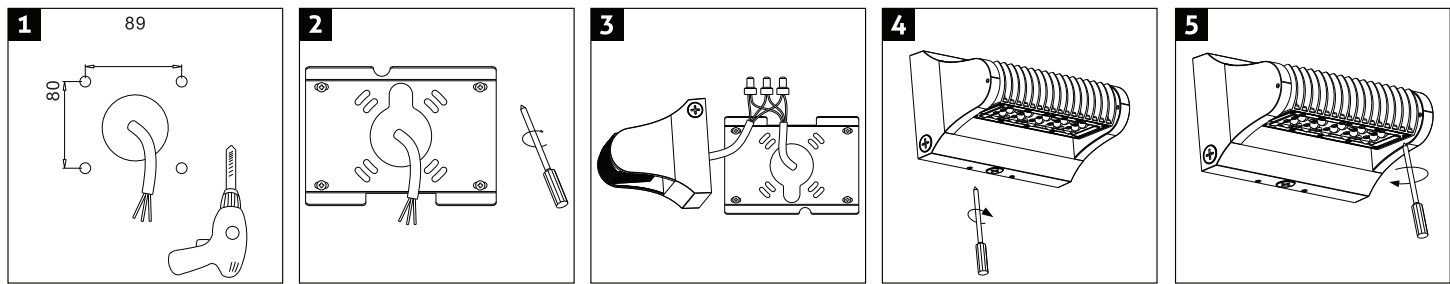
DIMMABLE

Compatible with most wall based 0-10V dimming controllers

COLOR TUNABLE SWITCH

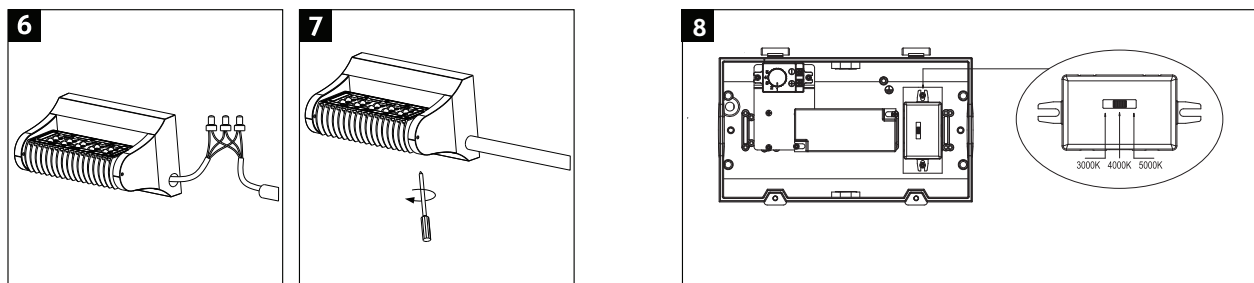


Installation Instructions



1. Drill holes in the wall corresponding to the holes in the mounting bracket and insert wall anchors.
2. Align mounting bracket with holes, insert and tighten screws.
3. Connect fixture wires to supply wires using wire nuts (*L to L, N to N, G to G*).
4. Install fixture onto mounting bracket and secure with screws on bottom of fixture.
5. Adjust angle of light and tighten screws.

Alternate installation using surface mounted wiring conduit.



Complete steps 1 & 2 above.

6. Install fixture onto mounting bracket and secure with screws on bottom of fixture. Connect fixture wires from the side to supply wires using wire nuts (*L to L, N to N, G to G*).
7. Tighten pipe to fixture. Adjust angle of light and tighten screws.
8. The CCT tunable selector switch contained within the fixture, allows the user to choose between three white color temperatures. ranging from 3000K to 5000K, prior to locking the back cover..