

sunlite®

INSTALLATION INSTRUCTIONS

LED MINI WALL PACK FIXTURES



Please read and understand this entire manual before attempting to assemble, operate or install the product.

WARNING: Avoid fire or electric shock. Follow installation instructions carefully. If unsure about electrical installation, consult a qualified electrician. Wear rubber-soled shoes and work on a sturdy wooden ladder. To avoid a hazard to children, account for all parts and destroy all packing materials. Wire connection must be insulated and waterproof.

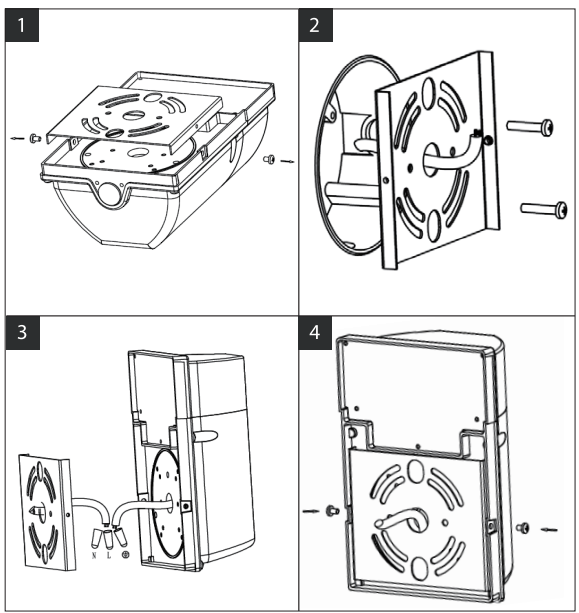
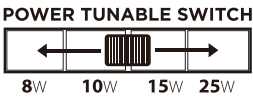
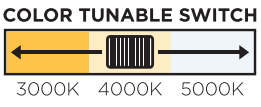
This device complies with part 15 of the FCC rules. Operation is subject to the following two conditions: (1) This device may not cause harmful interference, and (2) this device must accept any interference received, including interference that may cause undesired operation.

CAUTION: Turn off the power at fuse or circuit breaker box before installation and maintenance. NOTE: This fixture is suitable for 120-277V fused circuit. Fixture must be installed according to National Electric Code and local building codes. If you are unsure about wiring, consult a qualified electrician. Suitable for wet locations.

Retain these instructions for future maintenance reference.



Installation

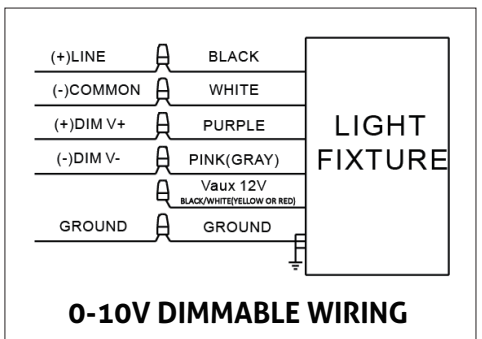


MOUNTING

- STEP 1.** Make sure the power is turned off at the source to the junction box.
- STEP 2.** Loose screws to take the quick installation plate apart. (Fig. 1)
- STEP 3.** Fix the quick installation plate to wall. (Fig. 2)
- STEP 4.** Connect incoming and outgoing wire using the provided wire nut. (Fig. 3)
- STEP 5.** Install fixture body to quick installation plate and tight the screws (Fig. 4)
- STEP 6.** Restore power at the source.

WIRING ⚠️ WARNING: Before Wiring, Make certain the input voltage is correct!

Connect the black fixture lead to the (+) LINE supply lead, Connect the white fixture lead to the (-) COMMON supply lead, Connect the GROUND wire from fixture to supply ground. if any, Connect the purple fixture lead to the (V+) DIM lead, Connect the Pink(Gray) fixture lead to the (V-) DIM lead, Cap the Vaux 12V fixture lead, if present. Do NOT connect.



CCT & POWER Settings

Sunlite's wattage and CCT tunable LED mini wallpack, allows for selecting the between four power and three light temperature settings to match a wide range of applications.

The wattage tunable selector switch on the fixture's back, allows the user to choose different power while the CCT tunable selector switch allows for choosing between 3000K, 4000K and 5000K before installation (*default 25W / 5000K*).

